



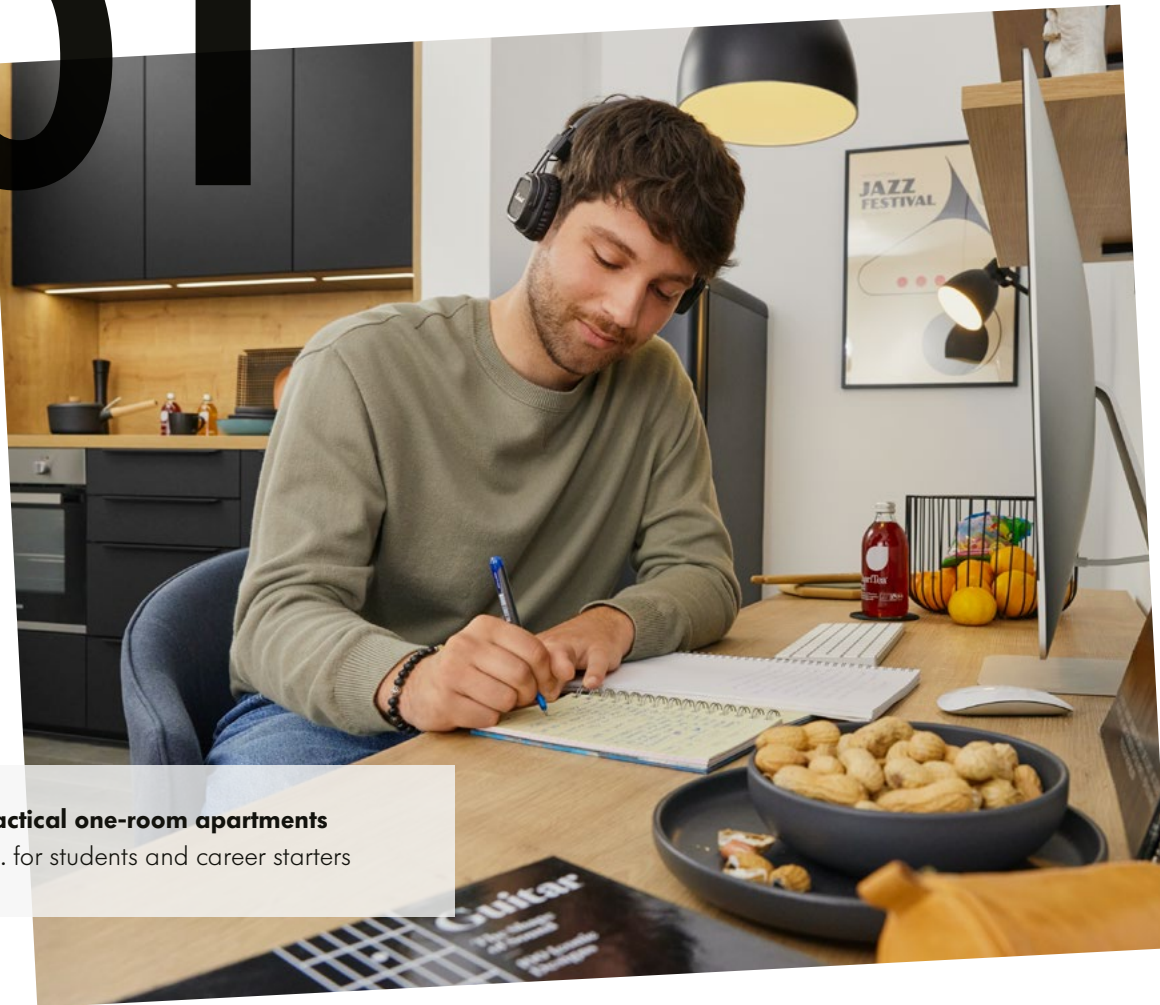
# SMALL PLACES

# BIG IDEAS

*Smart planning ideas  
for small spaces*



# 01



**Practical one-room apartments**  
e.g. for students and career starters

# 02



**Homely micro-apartments**  
e.g. for people living on their own

## PLENTY OF ROOM IN A SMALL SPACE

Not least in the wake of rising property prices and increasingly scarce living space, recent years have seen a sharp hike in the popularity of small apartments and houses. And sustainability is a subject that's increasingly at the focus here too. But no matter how small the home may be, it should be as inviting as possible and furnished to suit personal taste. Whether sloping ceilings or alcoves – optimum use should be made of every last inch, provide adequate storage space and feature clever functions.

**Small attic apartments**  
e.g. for couples or single parents



**Designer-style period apartments**  
with charm and ideal for single persons, couples and small families

Anyone with only a few square metres to play with is best advised to prioritise their preferences. This is where Nolte is an excellent choice because our smart planning solutions make it possible to combine generous storage space, practical functionality, budget and design in the best way possible. With Nolte's high-quality reproductions, modern concrete, stone and wood looks are finding their way into the home even on a small budget. But admirers of genuine materials will also find what they are looking for at Nolte: genuine materials such as wood, metal, lacquer, glass, cement or stone meet even the highest of expectations and leave you wanting for nothing. Making stylish statements, favourite decors can be continued on from the kitchen through to the hallway, utility room and living area. On the pages to follow, we will be showing how to create a welcoming and practical home even in the smallest of spaces.

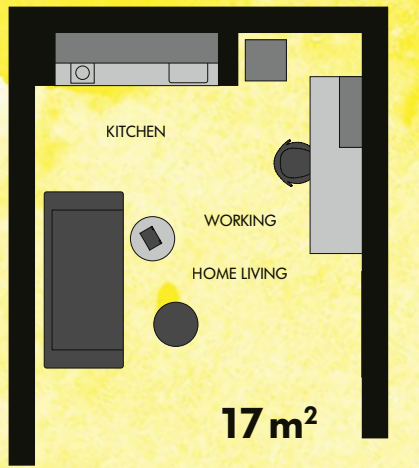
# 03

# 04





# STUDENT'S PAD



# 01





# PLANNING STORAGE SPACE THE SMART WAY

Students and career starters often have only a small room to call their home. The key here is to stay cool and plan the one-room flat with strategy. Here, it makes sense to plan storage space vertically – from floor to ceiling. Tip: make use of full room height and consider using wall units with a height of up to 135 cm in planning the space that's available. Extra deep wall units and base units also provide valuable additional storage space.

PLUS  
Black soft mat  
WORKTOP/SURROUNDING ELEMENTS  
Chalet oak

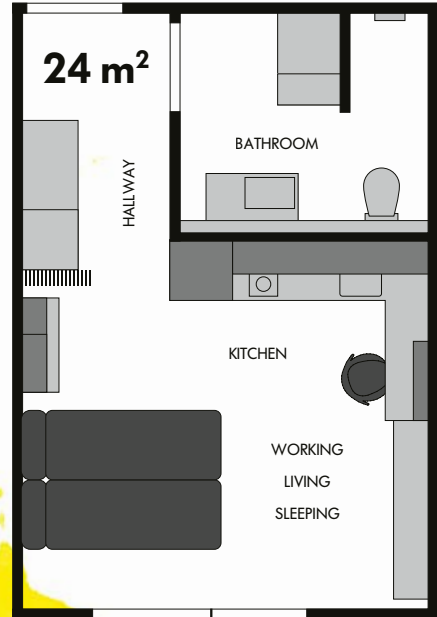


- 1 Lighting in the right place: the slim-line luminaires recessed in the cabinet base panel provide optimum illumination on the worktop.
- 2 Anyone choosing slim-line electrical appliances and a compact sink benefits from more work space in the small single-galley kitchen.
- 3 Base units in 90 cm carcass height provide 20% more storage space and provide room for an extra drawer in the base unit.





# 02



# MICRO APART MENT







# LOVELY HOME ON A FEW SQUARE METRES

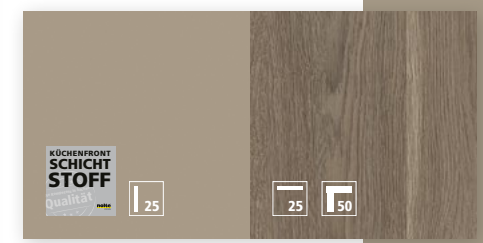
Less can also be more. Anyone starting out in working life in a town or city, or living on their own, frequently like to opt for a micro-apartment as they are usually less expensive than a flat containing several rooms. But: living on 24 square-metres can be great too. The important thing here is to furnish the apartment in a way that makes it radiate a homely and inviting aura despite the limited floor space. Is everything well coordinated, is space sensibly utilised and are areas logically defined? Compact furniture and homeliness are not mutually exclusive!



2

- 1 Invitingly furnished: illuminated wall shelf elements create a homely atmosphere with indirect lighting.
- 2 A micro-apartment put to multifunctional use. Partitions or furniture can be used to divide up open space and create different zones. This is where furniture such as a pull-out sofa also saves space.
- 3 Perfectly coordinated: the kitchen decor is reflected throughout the apartment. Floating shelving and shelf unit with integrated lighting complement the ambience.

PLUS  
Lava soft mat  
WORKTOP/  
SURROUNDING ELEMENTS  
Oak graphite silver



3



# 02

Whether single or young person starting out in the career world – micro-apartments are great places to live in. We're convinced: just a few square metres aren't the problem – provided planning is cleverly done and consideration is given to suitable functionalities. In a compact single-galley kitchen too, there are many ways and little tricks to create efficient organisation, keep everything neat and tidy and squeeze out additional storage space. Starting with choosing the right wall cabinets right through to a practical railing system and plinth drawer. Nolte Küchen has the answer to every storage problem!



### Built-in extractor hood

A built-in extractor hood saves space, and the unit it's fitted in can also be used for storing spices and other small items.



### Look of harmony

Uninterrupted fronts give the kitchen a consistent overall impression. Depending on taste and budget, there's a variety of decors to choose from.



### Right wall-unit height

It makes sense to match the height of the wall unit to the height of the apartment. Room height permitting, wall units can be planned in a height of up to 135 cm. That provides space to keep all kitchen utensils.



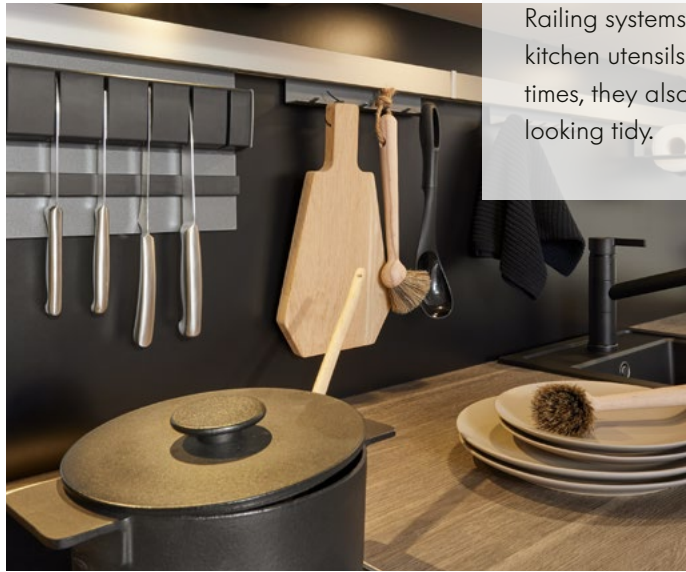
### Lighting

Spotlights recessed in the wall unit base panel ensure a well-lit work surface.



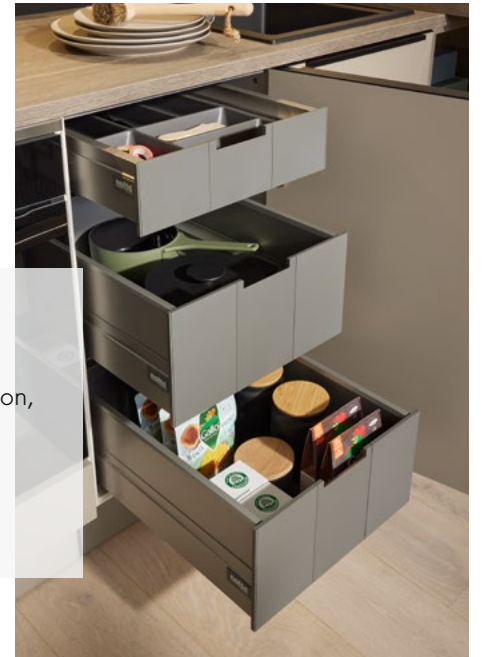
### Railing system

Railing systems not only hold kitchen utensils in easy reach at all times, they also keep the kitchen looking tidy.



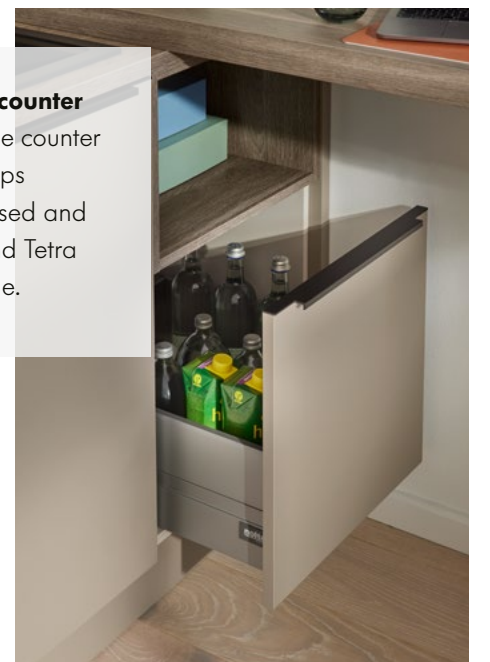
### Interior pull-outs

Closed from the outside, the front conceals neat and tidy organisation, keeping everything in place for instant access in pull-outs and drawers.



### Pull-out beneath the counter

Use the space under the counter as well: a pull-out keeps contents neatly organised and easy to find. Bottles and Tetra Pak cartons for example.



### Plinth drawer

For even more storage space, simply use the plinth. A plinth drawer provides space, say, for a dustpan, cleaning cloths, sponges and much more besides.



# MAKING MORE OF IT ALL





**Tip**  
Lighting and mirror make small rooms look bigger. Additional indirect light sources make the apartment look homely and more spacious than with just one ceiling light.

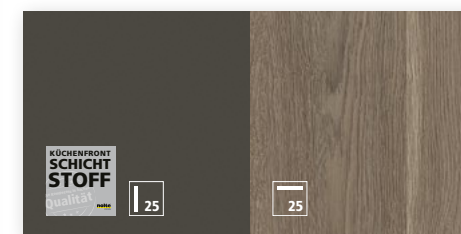


2

- 1 A well-planned hallway system provides ample space for all manner of shoes, handbags and garments, and can also double up as seating.
- 2 A veritable haven of well-being can be created on just a few square metres in the bathroom too.



PLUS  
Graphite soft mat  
WASHSTAND TOP/  
SURROUNDING ELEMENTS  
Oak graphite silver

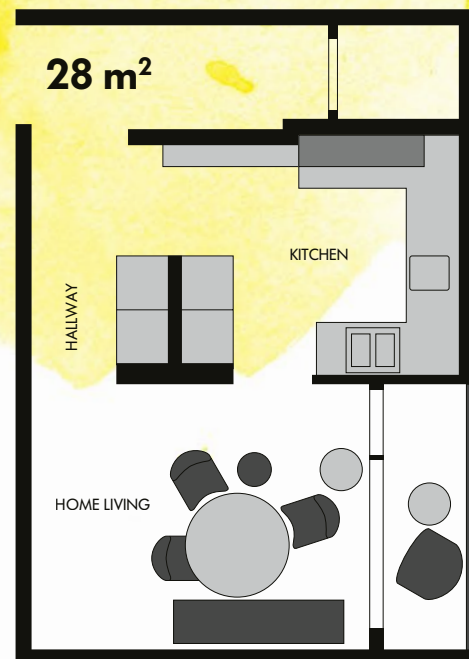


## FEEL-GOOD AMBIENCE IN A SMALL SPACE

Bathroom space in a micro-apartment is often limited. This makes it all the more important to find compact solutions that still meet all requirements and provide every abundance of options. Maintaining a look of harmony, versatile cabinet systems provide the option of integrating the washing machine into the bathroom, and washstand vanity units with practical pull-outs offer generous storage space for bathroom utensils. Lighting strips recessed into the sides of the vanity unit shelf section create a feel-good ambience in the bathroom.



# SLOPING CEILING



# 03



# 03



## UTILISING EVERY INCH OF SPACE

4th floor, about 50 square metres, sloping ceilings: mother and child living together in a small space – this calls for creative planning. Yet storage space galore can be created in oddly shaped spaces too. Whether narrow passages, alcoves or spaces with sloping ceilings: anyone with clever planning ideas can create a homely and inviting kitchen with shelves, low wall units and a variety of corner solutions.



**Tipp**  
Open shelves merge seamlessly into the living area, create practical storage space and add decorative appeal.

- 1 Every last inch utilised to the full: a U-shape kitchen provides all manner of storage space.
- 2 Whether large refrigerator/freezer combination or simply a lot of storage space: a tall unit in full room height provides loads of space. The illuminated finger pull makes a further eye-catcher.



LUX High-gloss white  
STONE Beton



# SPACE CLEVERLY OPTIMISED

Eating, cooking and playing together – to give Mum and daughter sufficient space in the home, every square metre should be planned with care. One example here is to configure the last 15 cm in a row of units with a narrow pull-out. Reduced-depth cabinets leave sufficient space even in narrow thoroughfares. Purposefully targeted lighting makes the room look bigger and more inviting. Nolte Küchen has just the right answers to all this, be it illuminated finger pulls, wall units with illuminated shelves, floating wall shelves with integrated lighting or lighting below wall units. Every solution gives you the perfect answer to giving a kitchen that eye-catching look.

# 03



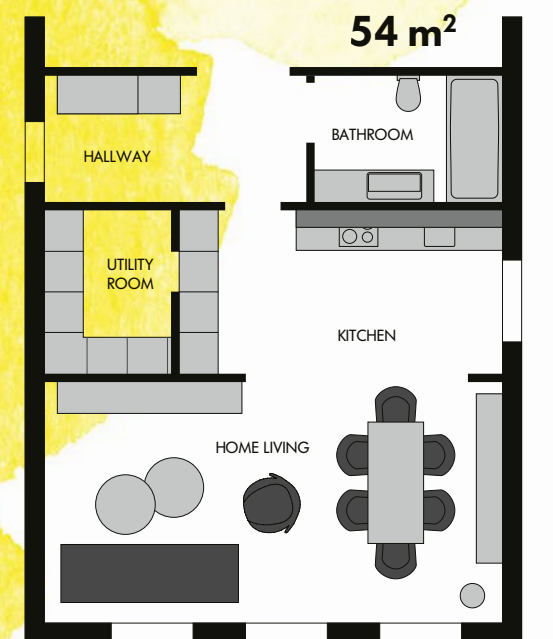
- 1 Tidy: the adjoining hallway system matches the kitchen perfectly and provides plenty of space for garments and all sorts of other items.
- 2 Reduced-depth cabinets and shelf elements never get in the way even in narrow thoroughfares. Lighting in the bottom panel make a very distinctive eye-catcher.
- 3 Here, even the last 15 cm are utilised: a narrow pull-out, for instance, provides plenty of space for bottles of oil and vinegar.

Further details on perfect **ORGANISATION IN THE KITCHEN**





# PERIOD PRO PERTY



# 04



# 04



## SYMBIOSIS OF PERIOD CHARM AND URBAN STYLE

Furnishing an apartment in a period building demands particular skill as in many cases beautiful ornamental stucco coving runs around ceiling or since brickwork mustn't be disturbed. A period building often fascinates with very special charm, which should or even must be conserved. They also provide the opportunity to furnish a home in urban style and conjure a very distinctive ambience in which to live.

How can period charm be retained while at the same time enhancing practical utility? Not only calling for a sympathetic approach and an adept hand, this first of all demands compelling ideas. For instance, a real-wood kitchen front emphasises the character of the building and creates a warm and inviting atmosphere. At the same time, it leaves a rustic feel, while the absence of wall cabinets creates a look that reflects the spirit of modern design.

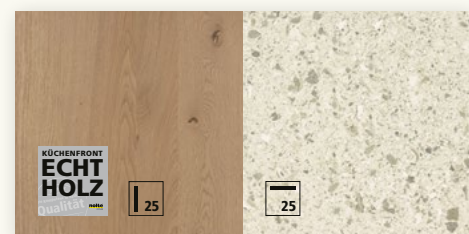


TAVOLA oak pinot  
WORKTOP Terrazzo bianco



- 1 The **neoBOX** drawer and pull-out system brings exquisite design to the cabinet interior and is one of the elements every **nolteneo** kitchen comes with. The narrow side frame appeals for its simple elegance – nothing spoils the look. By way of option, the **neoBOX** can also be used to illuminate the pull-outs. Fitted on the right and left of the drawer side frame, the LED lighting strip conjures a very distinctive atmosphere and shows where everything is when the drawer is opened.
- 2 Different twist on backsplash design: the lower part of the back wall is in terrazzo bianco worktop finish, while the upper section comes in stunning timber look to match the shelves and fronts.

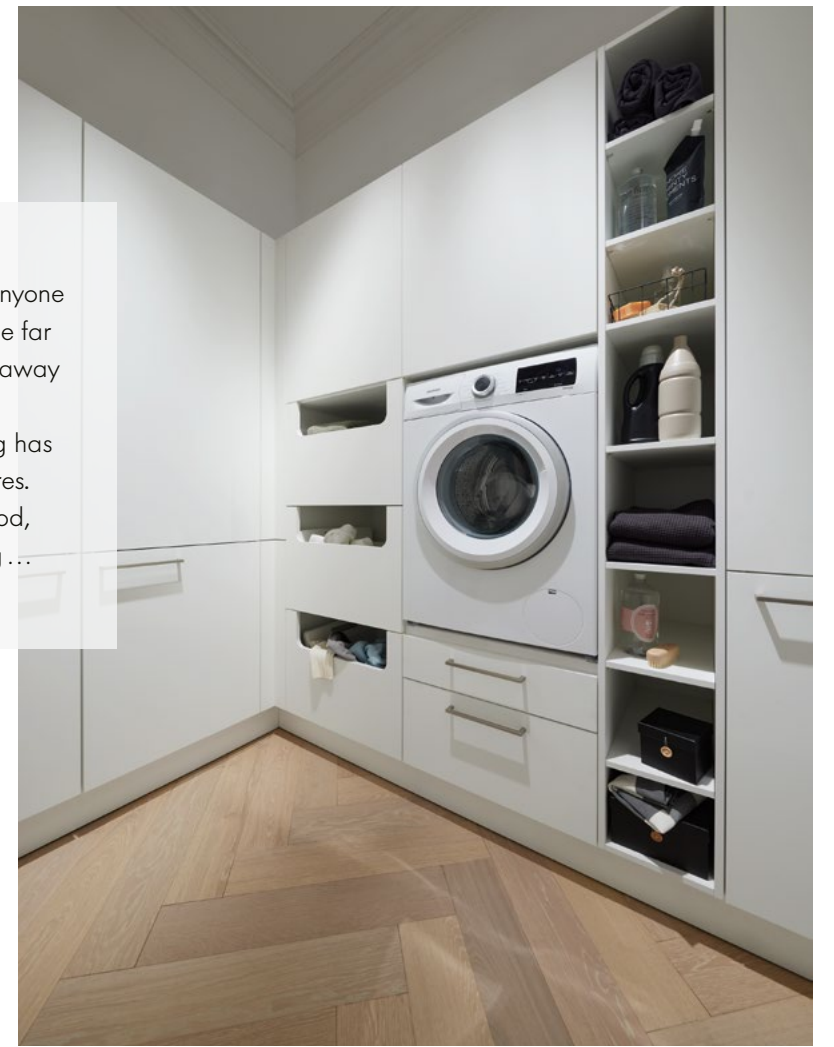


# 04



### Tip

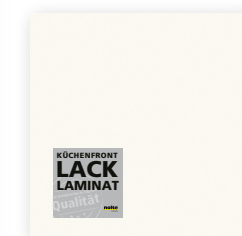
For a particularly smart look, anyone locating their utility room at the far end of the kitchen can hide it away behind a through-door. Perfectly organised, everything has its place on just 5 square metres. Doing the washing, storing food, organising waste for recycling ... it can all be done.



## EVERYTHING EFFICIENTLY ARRANGED

It's the place for everything that has no home elsewhere or spoils the look: the utility room. It's where you can keep your vacuum cleaner, ironing board, washing machine, dryer, laundry baskets, deposit bottles and much more besides. Thanks to its space-saving organisation systems, the utility room makes housekeeping more efficient and provides the key to creating a home that's altogether modern, tidy and focused on aesthetic appeal. Anyone cleverly integrating their utility room, as in our composition, looks at a closed, homogeneous front in the kitchen: hidden behind it is the entire utility room, providing space for a variety of household objects and activities.

FEEL White soft mat







# 04

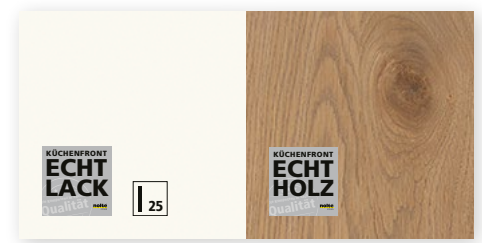
## NOLTE LIVING – DESIGN CONSISTENCY

Living space – particularly in urban environments – is becoming ever scarcer. As a result, the various parts of the home are merging on an ever increasing scale. The important thing here: create homely statements, plan transitional zones with a consistent look and use decors as a continuous thread throughout. Offering a wide selection of furniture, decor finishes and lighting options, Nolte LIVING provides the key to a balanced feeling of homeliness beyond the kitchen: our example composition features open shelf elements with lighting recessed into the sides of the wall storage system. This way, living and dining area look bright and welcoming.



- 1 Whether eating, living or working: individual areas are merging more and more.
- 2 Dining area and kitchen continues through into the entrance area: the hallway unit in white soft mat features design accents in pinot oak.
- 3 Coordinated design consistency in the living area too: the sideboard in white soft mat has been chosen to match the wall storage system.

SOFT LACK White soft mat  
 HALLWAY SURROUNDING ELEMENTS Oak pinot





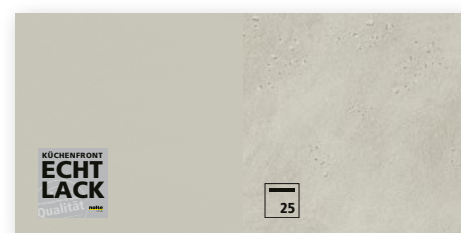


1 Indirect lighting creates a very special feel-good ambience in the bathroom too.

2 The washstand vanity units provide the space needed for storing all bathroom utensils while ensuring practical interior organisation.



SOFT LACK Platinum grey soft mat  
WASHSTAND TOP Cement sapphire grey



## NOLTE SPA – EVERYTHING FOR A PERSONAL HAVEN OF WELL-BEING

Nolte SPA also provides the option of fitting out bathrooms with high-quality Nolte cabinetry. The product palette not only captivates with elegant design but practical functionality, high quality and outstanding value for money. A wide range of colour and surface-finish options provide the basis for designing all bathroom cabinetry to suit personal taste, style and budget, transforming the bathroom into an individually tailored haven of well-being.



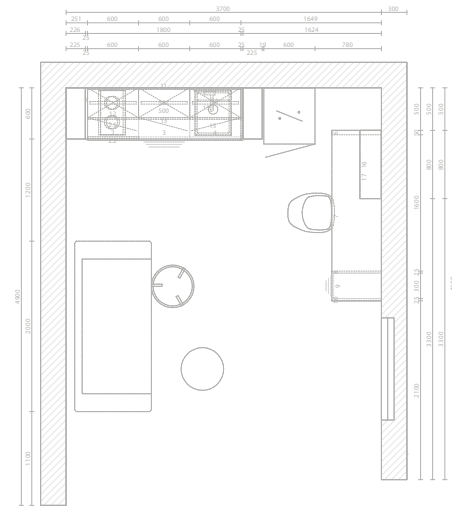
**Creative student**

Only one room, many terms to go. The pad was to be modern and affordable. Even if the room did only have a few square metres, it provides everything needed. The trick: planning the wall units and shelves, we made full use of the room's full height. Storage space with a tall bill – yet the plan worked out.



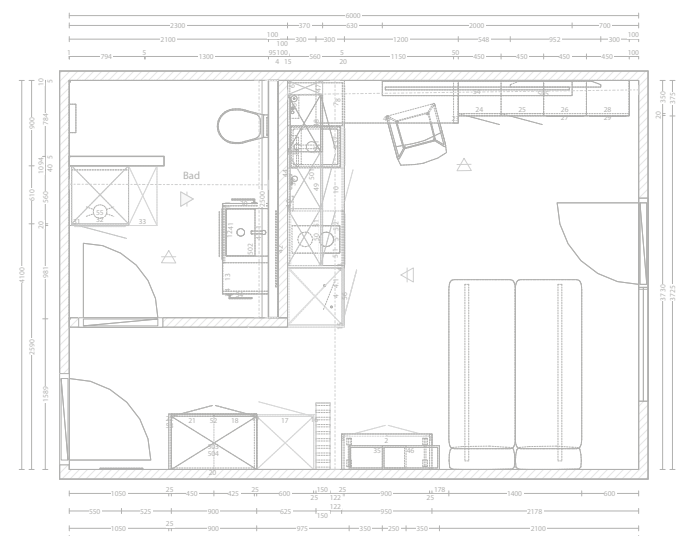
# FOUR STORIES – FOUR FEEL-GOOD PLACES

Whether student pad, micro apartments for people living on their own, attic flat for single parents or period abode for couples living in town – Nolte Küchen always has the right furnishing solution up its sleeve. No matter how small the apartment and how great the challenge: our four stories show how everyone can achieve their very own personal haven to feel at home in.



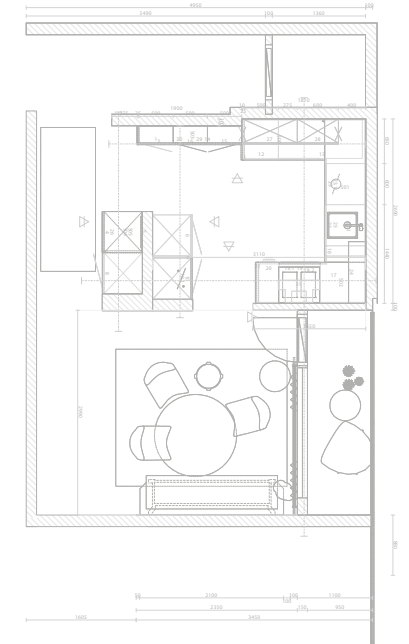
**Single person with high expectations**

Small but impressive: the micro-flat on approx. 24 square metres. The remit: high-quality furnishings without compromising on practical features and maximum storage space. The reality: everything was realised to plan with a plethora of ideas. Railing system, built-in extractor hood, plinth drawer and multifunctional furniture in consistent decor finishes provided the basis for creating a homely micro-apartment.



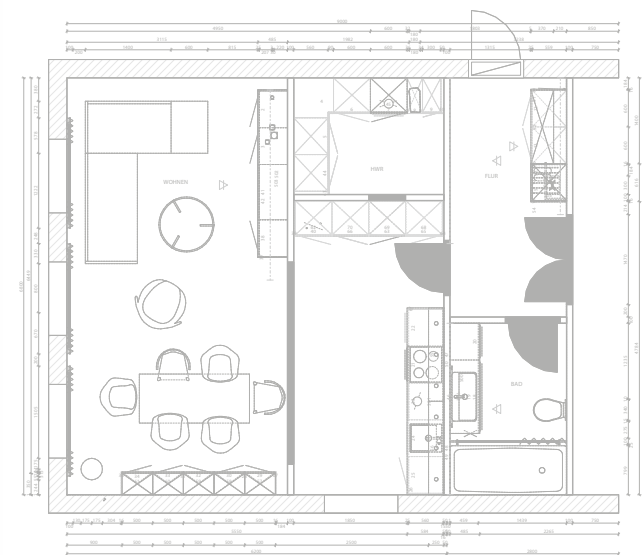
**Grown-up and little one under one roof**

An attic flat with all sorts of alcoves and sloping ceilings. The answer: a U-shaped kitchen with corner cabinet solutions, low wall units, open shelf elements and a variety of lighting solutions create well-balanced transitions and ample storage space.



**Liaison with exacting expectations on design**

A period building with historical charm in city location that must be respected. Available space had to be planned to provide storage space, cater to many different functions and exude urban style. In this respect, all wishes were met, such as through the integrated utility room – hidden away behind the closed design of the kitchen's frontage.



Click here to go to the digital **NOLTE KITCHEN PLANNER**



More details on smart planning ideas on our **HOMEPAGE**







# LIVING IN THE KITCHEN ...

... is a message you can certainly take literally where Nolte Küchen is concerned. Here you will find everything to make your dream kitchen come true: to suit virtually any budget, any expectation and always in top quality – made in Germany.

Subject to technical change without notice. Colour shades in this catalogue may sometimes vary slightly from original colours for photographic reasons.

Nolte Küchen GmbH & Co. KG | Anni-Nolte-Straße 4 | 32584 Löhne | Fon +49 57 32 8990 | [www.nolte-kuechen.com](http://www.nolte-kuechen.com)



**nolte**<sup>®</sup>  
KÜCHEN